

# Mission Statement

We will work in partnership with you and your family to find solutions to help you overcome your current housing crisis.



## How to apply:

During our walk-in hours, please visit 19 W. Pacific where an intake specialist will meet with you and help identify services and resources for your family. They may also walk you through an assessment, which will capture the current level of need your family is experiencing in order to assess your family for homeless housing options.

### Homeless Housing Options through HFCA include:

- Rapid Re-Housing Programs
- Temporary housing placement services, which include Emergency and Transitional Housing Programs
- Permanent Supportive Housing

## Participating Organizations



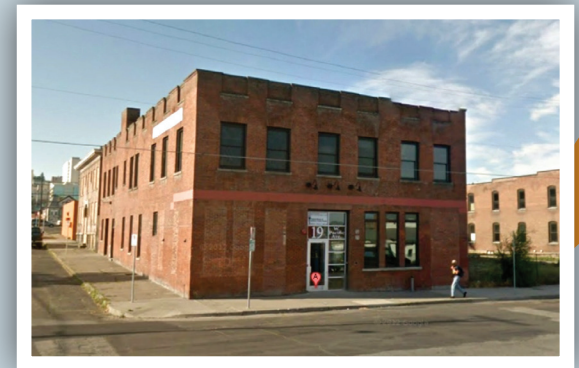
**LOCATED AT**  
19 W. Pacific,  
Spokane, WA 99201

Walk-in hours:  
Monday - Thursday  
12:30 - 4:30 pm

**325-5005**

# HFCA

## Homeless Families Coordinated Assessment



# 325-5005

19 W. Pacific  
Spokane, Washington  
99201

## You may qualify for: **Rapid Re-Housing**

*Re-Housing provides time-limited financial and case management service to assist families in obtaining permanent housing.*

### **RE-HOUSING QUALIFICATIONS:**

- Literally Homeless couples or families with children only.
- Initially: 30% AMI (very low income)
- Ability and willingness to increase income in a short period of time.
- Provide required documentation as requested.

### **RE-HOUSING PROGRAM PARTICIPATION REQUIREMENTS:**

- Be able to find housing with assistance from a case manager in less than 30 days.
- Work with Case Manager to come up with a housing stability plan.



## You may qualify for: **Temporary Housing**

*Temporary housing provides families with a shelter or transitional housing unit with support services designed to decrease a families barrier(s) to permanent housing.*

### **PROGRAM PARTICIPATION REQUIREMENTS:**

- Varies by program

### **PARTICIPATING PROGRAMS**

- Family Promise of Spokane
- Salvation Army
- SNAP
- St. Margaret's
- Transitions: Transitional Living Center (TLC)
- VOA: Alexandria's House
- VOA: Aston Bleck
- YWCA

## You may qualify for: **Permanent Supportive Housing**

*Permanent Supportive Housing assists families that are 'chronically homeless' and disabled with long-term housing and case management services.*

### **PSH QUALIFICATIONS:**

- 30% AMI
- Literally Homeless
- For program placement consideration: *documented disability*
- For program placement consideration: *documented history of homelessness*

### **PROGRAM PARTICIPATION REQUIREMENTS:**

- Varies by program

### **PARTICIPATING PROGRAMS**

- St. Margaret's Shelter
- Transitions: Transitional Living Center (TLC)
- YWCA

**Programs will contact you directly once you have been referred from HFCA to fill their program vacancy.**

**Remember: referrals are based upon 'current level of need' so if your circumstances change, come and see us again to update your assessment information.**

Please remember: there is no guarantee of homeless housing placement. Our community model looks at serving families based upon homeless status, income and level of need, so please partner with us to explore every housing option available for you and your family.